



FRAMES FROM GENERATIONS

company profile



GARONE HABITAT



GARONE HABITAT
LEGNO E DESIGN

Behind our windows
There is a story that lasts
for generations.

G GARONE HABIT
PORTE E FINES



TAT
TRE



THE PLACE WHERE
FIXTURES BECOME
STYLE AND DESIGN

Your home will not have
boundaries if you have
Garone Habitat windows

Index

- 1. About us 8**

- 2. History 9**
 - 2 From the first to the third generation 9

 - 2.1 The evolution of the company 12

 - 2.2 Today & tomorrow 13

- 3. Production 16**
 - 3.1 Wellness & comfort 17

- 4. Customized design 20**

- 5. Innovation 21**

- 6. Design 24**
 - 6.1 Lumina, synthesis of technique and design 25

- 7. Commercial network 28**

- 8. Internationalization 29**

- 9. Guarantees and certifications 32**



GARONE HABITAT
LEGNO E DESIGN

Strumenti da Generazione

GARONEHABITAT.COM



WE ARE THAT WHAT
WE DESIGN AND
CREATE

1. About Us

Garone Habitat is a leading company in the field of wood and wood-aluminum frames that has developed a modern and efficient workflow, thanks to the introduction of robotics in the production process and the continuous specialized training of personnel.

High-tech machinery and qualified personnel have allowed the creation of a production pole able to create windows and doors of excellence.

Garone Habitat is a company in continuous evolution, which can count on a branched commercial network throughout Italy and an important distribution activity in Europe and Central America.

2. History

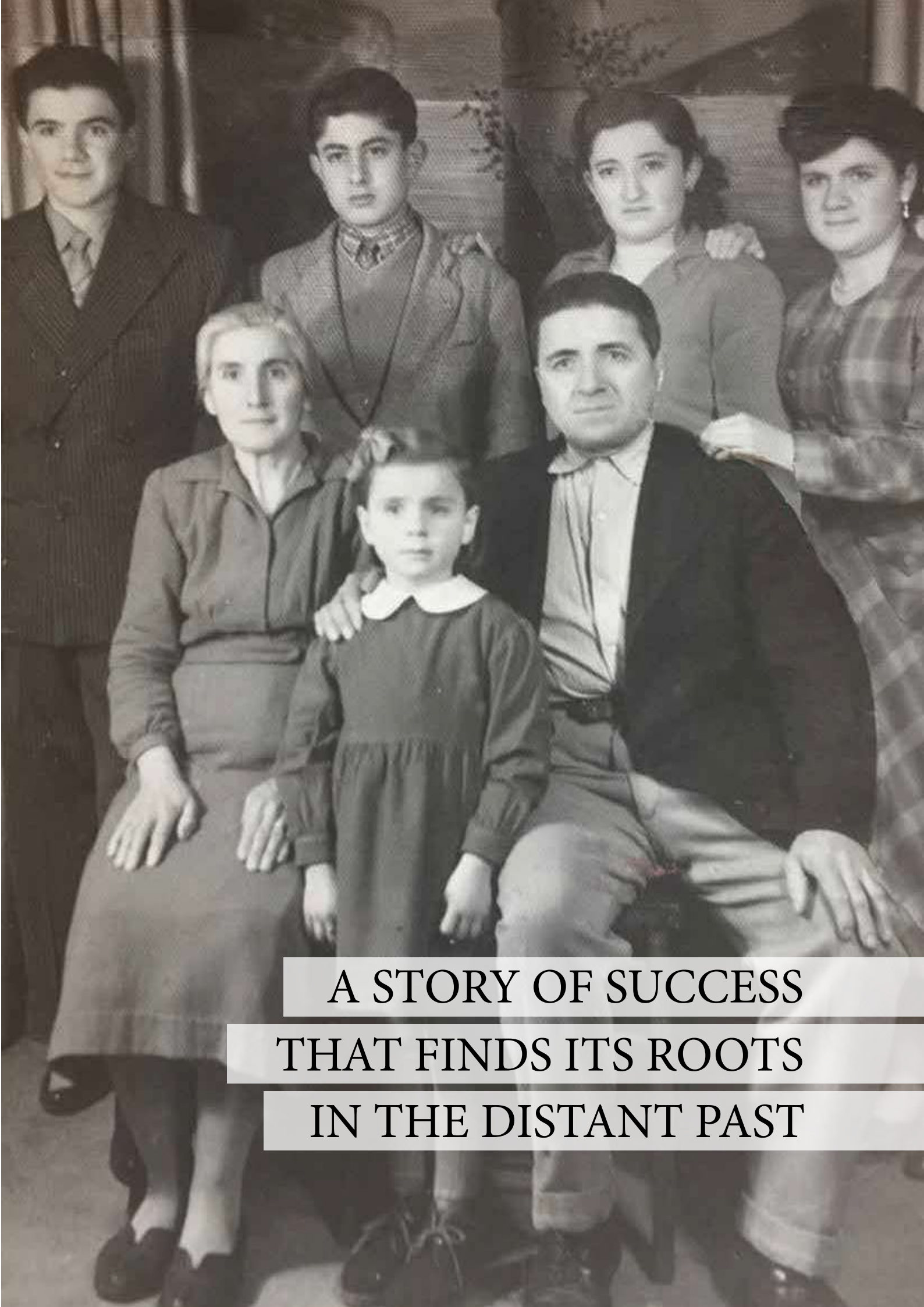
From the first to the third generation

The company's roots date back to 1940, when Francesco Garone founded the first carpentry shop.

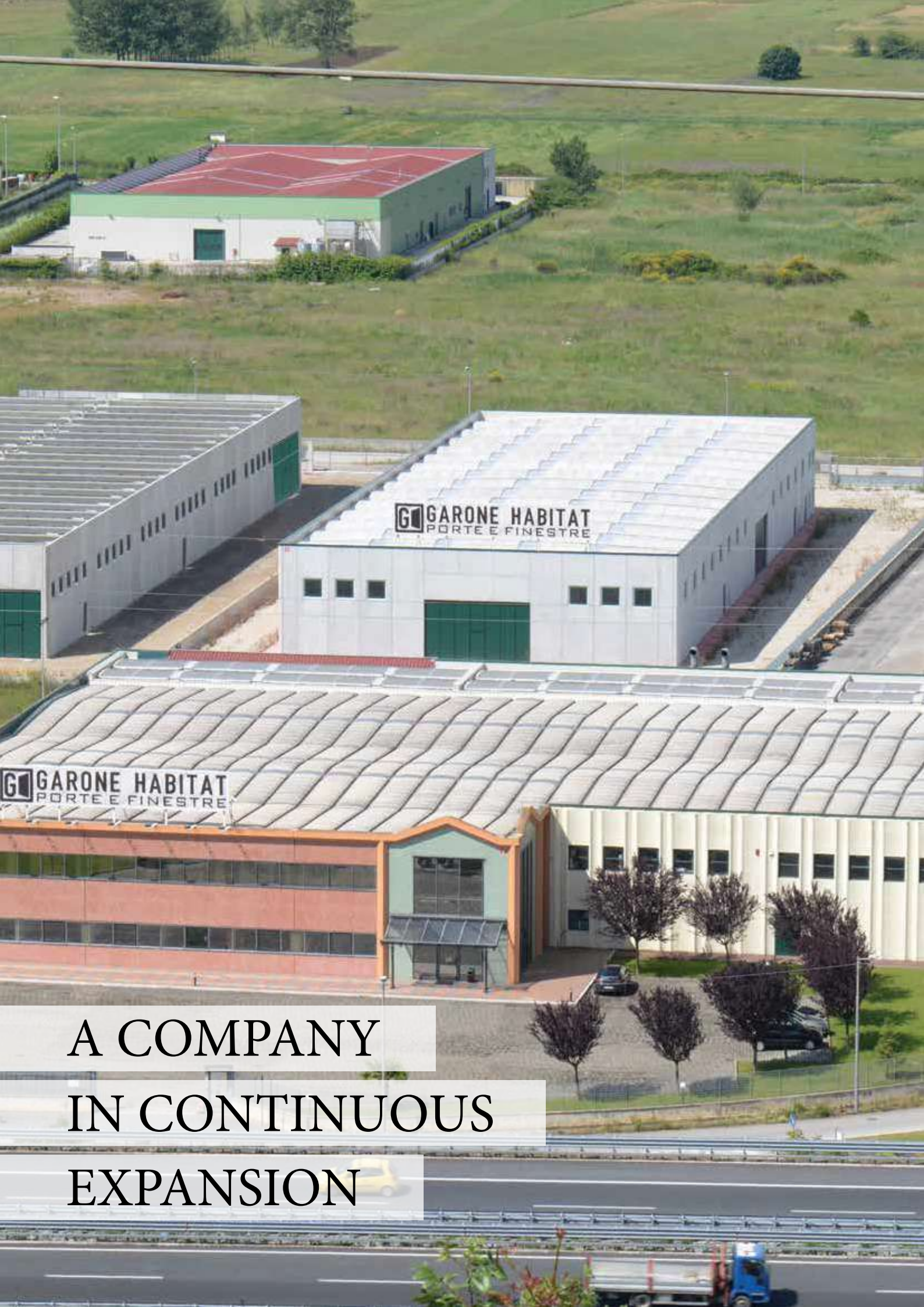
Despite the difficulties related to the war, the activity begins to take its first steps. Things change decisively during the years of the economic miracle, so much so that they prepare for the generational turnover.

In 1959 the rudder passed to his son Giuseppe, who adopted the first machinery and hired specialized workers. Meanwhile the three sons Franco, Pasquale e Gianluca begin to attend carpentry and to plan their future.

The generational change will take place in 1986, with the transition from artisan reality to semi-industrial.



A STORY OF SUCCESS
THAT FINDS ITS ROOTS
IN THE DISTANT PAST



A COMPANY
IN CONTINUOUS
EXPANSION 

2.1 History

Company evolution

In 2000 the company moved to a new production facility with a covered area of 3,600 square meters and an uncovered area of 12 thousand square meters in the industrial area of Polla (Sa).

At the same time, new high-tech machines are purchased. In the following years, the environments and productive capacities continue to expand, so as to hire new qualified personnel. In 2003, the uncovered area expanded by an additional 10,000 square meters, while the following year it became they add 700 square meters to the production area, destined to the realization of wooden-aluminum fixtures.

In 2012 the second expansion of the company was achieved, with the construction of the raw material storage area of 2,700 square meters. In the same year, the uncovered area also expanded by a further 6,000 square meters, reaching a total area of 28,000 square meters.

2.2 History

Today & Tomorrow

In 2015, robotics was introduced into the company to achieve even higher quality standards, to become one of the most quoted players in the wood and wood-aluminum window and door frames in Italy and expanding in Europe and America.

In 2018 the business was expanded with new plants for the production of custom-made furniture.

In 2019 a photovoltaic system was installed for the company's energy needs. In the two-year period 2022/2023 a new company expansion project will be launched with the construction of new offices, exhibition and adjoining production area on an area of over 6000 square meters.



Currently, Garone Habitat is a leading company in the sector, capable of interpreting market changes.

Quality, competence and reliability are the characteristics main features of Garone Habitat, without forgetting the importance that the company reserves in the technological field, through the search for new techniques productive, and in commercial terms, through the partnership with the best dealers in the sector.



VISION

INNOVATION

AND QUALITY



PASSION

EXPERIENCE

AND COMPETENCE

3. Production

Project & production

The wooden and wood aluminum frames are designed by the technical team, which is also entrusted with the task of carefully selecting the materials.

The attention to detail, therefore, starts from the design and is a philosophy that accompanies all phases of work, from production to after-sales assistance.

The design phase is entrusted to a team of professionals in the sector, who elaborate with care and precision various models of doors and windows, too very complex, using materials and finishes always of the highest quality.

Thanks to this work process, Garone Habitat is today synonymous with quality, comfort and design.

3.1 Production

Wellness & comfort

Garone Habitat today means better quality of life, safety, comfort and design.

All this thanks to the materials used, particularly indicated to ensure maximum safety, but also an excellent degree of acoustic and thermal insulation.

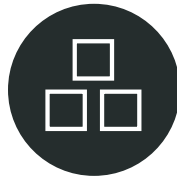
Moreover, being able to count on the presence of highly specialized personnel, the products are subjected to continuous checks, aimed at guaranteeing very high quality levels.

All the production phases are carried out directly in the company, so as to be able to control every aspect related to the industrialization of the products.



Design

All our windows are designed, designed and manufactured entirely by our technical team.



Raw material

We only use materials that we analyze and let's check the sources.



Production sites

We realize project, production and sale.



Distribution

Our windows and doors are also distributed in Europe and America.



KNOW HOW
AND PLANNING

4. Customized Design

The secret of an excellent frame, especially those made of aluminum wood, lies in the design. This is because the technicians analyze the details of each project, in order to guarantee a good job and satisfy the customer's needs.

Many problems are often faced. So we need to analyze and plan everything with the maximum precision, without neglecting any detail.

But designing means taking into account all the other phases, starting from the industrialization phase up to the assembly of the frames. Moreover, fixtures are essential elements of buildings, for which they must have specific technical characteristics.

Garone Habitat is able to make available to customers all the know-how necessary to have technically excellent and high quality aluminum wood frames.

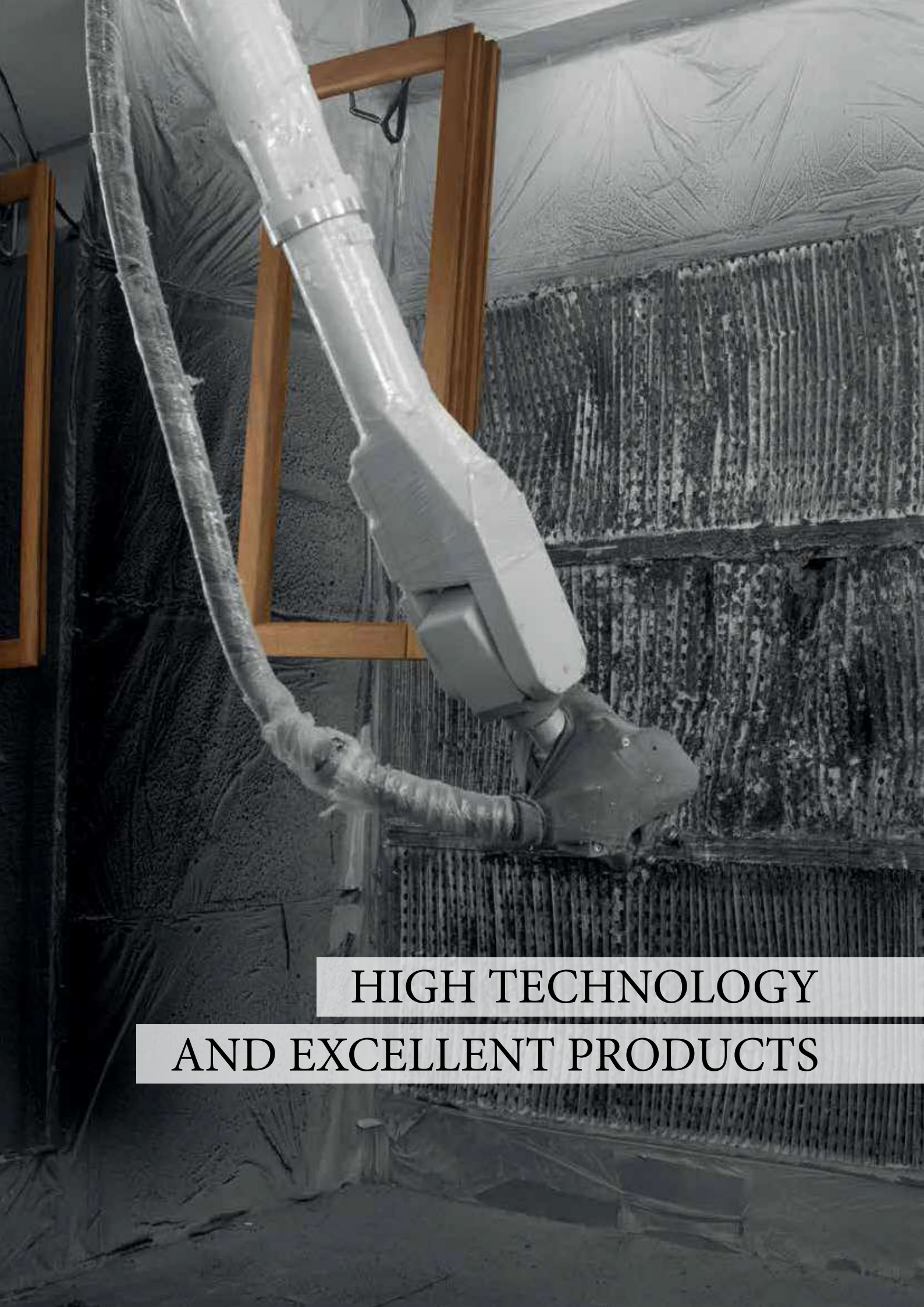
5. Innovation

In recent years, Garone Habitat has invested substantial financial resources to automate the production system, through the introduction of robotics and high-tech machinery, thanks to which the company produces high quality fixtures.

In particular, Garone Habitat has tools that can analyze the pieces of wood that make up the window and eliminate any defects (knots, resin bags, etc.).

Furthermore, the material used to produce wooden frames is carefully selected and subjected to strict quality controls; it is separated by color tones, so as to have a more homogeneous color.

Thanks to these careful working procedures, the Garone Habitat wooden frames are a real piece of furniture.



HIGH TECHNOLOGY
AND EXCELLENT PRODUCTS



6. Design

Garone Habitat fixtures, thanks to the refined lines and shapes, represent a real furnishing object, managing to adapt to any style of living.

Wood brings the charm of a material into homes constructive living and natural, the emotion of wood materializes with the elevation of home comfort.

Aluminum offers a clean design and essential lines; protects and guarantees an excellent seal without consider the advantage of eliminating maintenance interventions.

6.1 Design

Lumina, synthesis of technique and design

Lumina is a synthesis of technique and design, the new way to transform environments into wellness areas, where light, energy optimization (both in winter and in summer), acoustic insulation and cutting-edge design give new value to homes.

Zero maintenance, competitive costs and very high customization possibilities make it a fixture that makes the difference in terms of quality of living.

The Lumina series also includes a sliding uplift, called “Imago”, with an invisible frame of less than 2 centimeters, capable of fusing the exterior with the interior thanks to its minimalist design.

Imago guarantees thermal insulation, resistance to atmospheric agents and burglar-proof security thanks to the integration of the Climatech threshold, the innovative dedicated accessories and the Poseidon safety closure.



RESEARCH
DEVELOPMENT
AND DESIGN



COMMERCIAL ARTICULATED
NETWORKS AND CAPILLARIES

7. Commercial network

Garone Habitat can count on a widespread network commercial throughout Italy and an important distribution activity in Europe and Central America, equipped with a specific technical culture, able to give targeted answers to the questions posed by the client.

In recent times, the company has focused on the development of a “valuable commercial network”, through the activation of real business partners throughout the country.

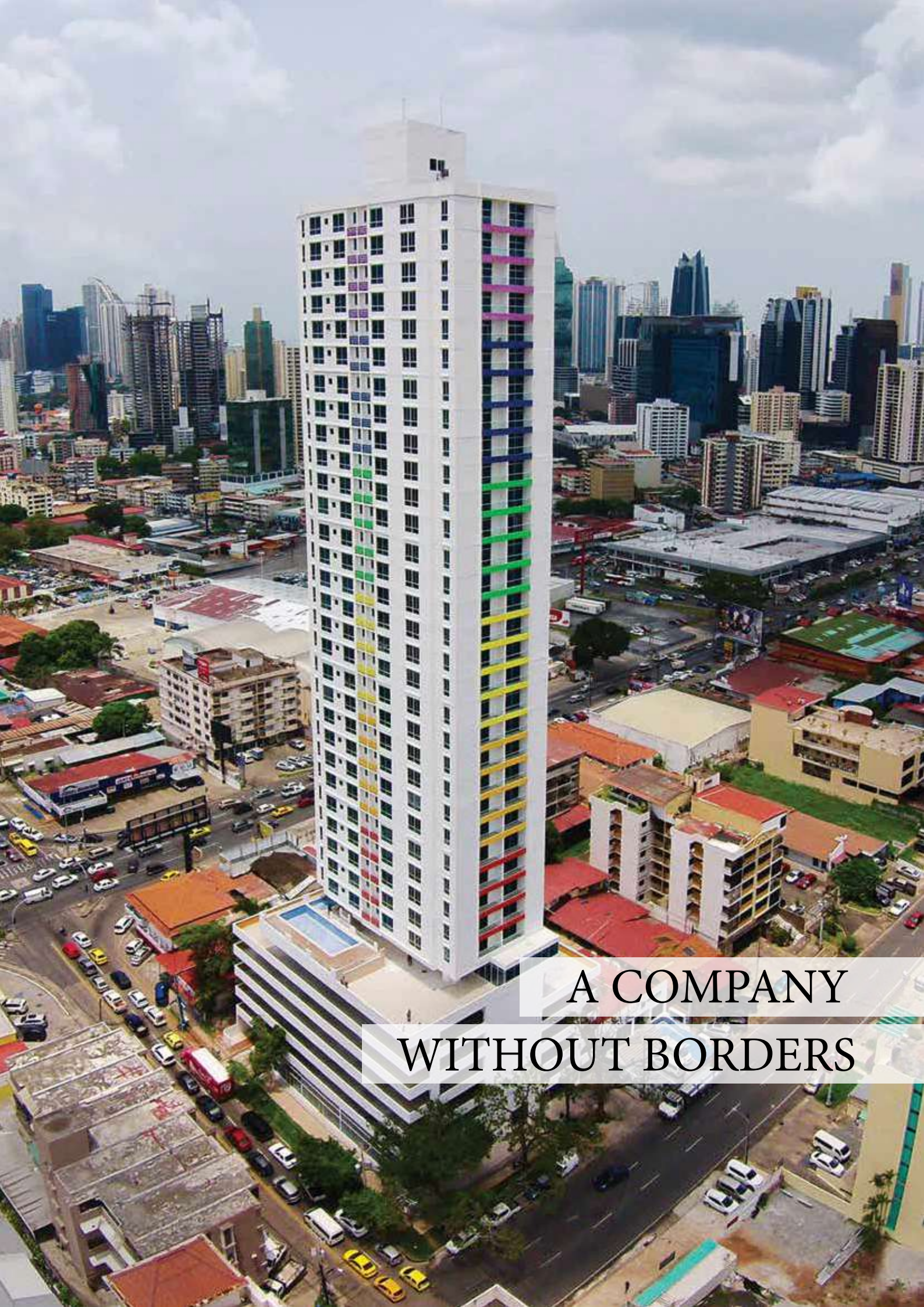
An ambitious commercial project, which aims to turn showrooms into places that can transmit company values and present products in the most accurate and suggestive way.

8. Internationalization

After consolidating its presence in the Italian market and in many foreign countries, the company has recently started important commercial collaborations in Central America.

Thanks to product quality, production flexibility and commercial partnerships, Garone Habitat has obtained an important order, or that of making the frames and supplying the turnkey contract for new skyscrapers of Panama.

Product flexibility, commercial presence and technological innovation, therefore, represent i factors behind the success of the Italian company in the international scenario.



A COMPANY
WITHOUT BORDERS



GUARANTEED PRODUCTS
AND CERTIFICATES

9. Guarantees and certifications

Garone Habitat fixtures are fully included in construction products and are governed by Regulation 305/2011 / EC, under which all windows require CE marking, or the declaration of conformity of these products with the essential requirements of the European Directive 89/106 and the product standard UNI EN 14351-1.

The frames have been subjected to laboratory tests, as expressed by the UNI EN 14351-1 Standard for the CE marking. In particular, the fixtures are submitted to the tests of thermal transmittance, wind resistance, water tightness, air permeability and acoustic performance.


All Garone Habitat products are guaranteed and certified according to current regulations and allow access to tax deductions.



WE ARE RELIABLE
AND INNOVATIVE
EXPERTS



GARONE HABITAT
LEGNO E DESIGN



Garone Habitat s.r.l.
Loc. Sant'Antuono
I.A. 84035 Polla (SA)
VAT Number 02624830655

Phone 0975 390632
0975 390363
fax 0975 1985118
Freephone Number
800 210 431

www.garonehabitat.com
info@garonehabitat.com